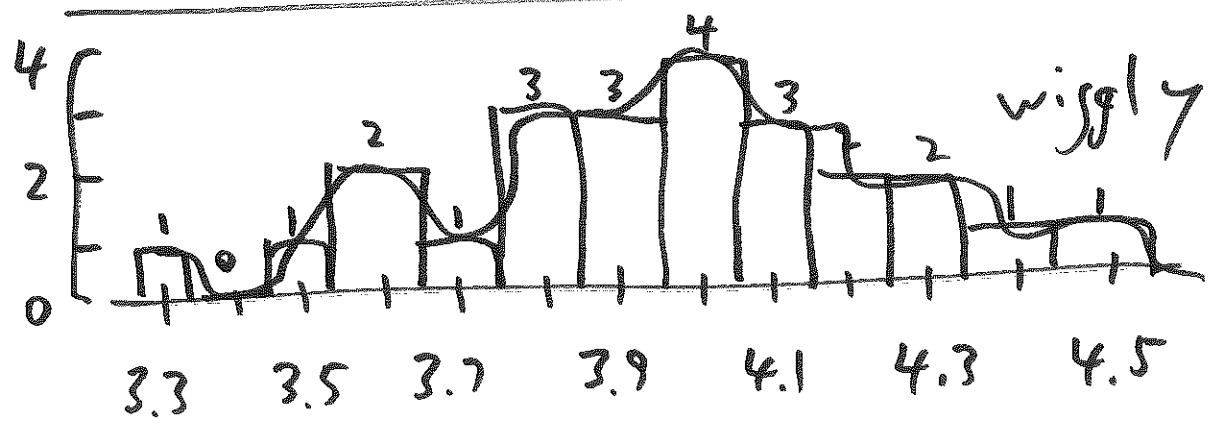


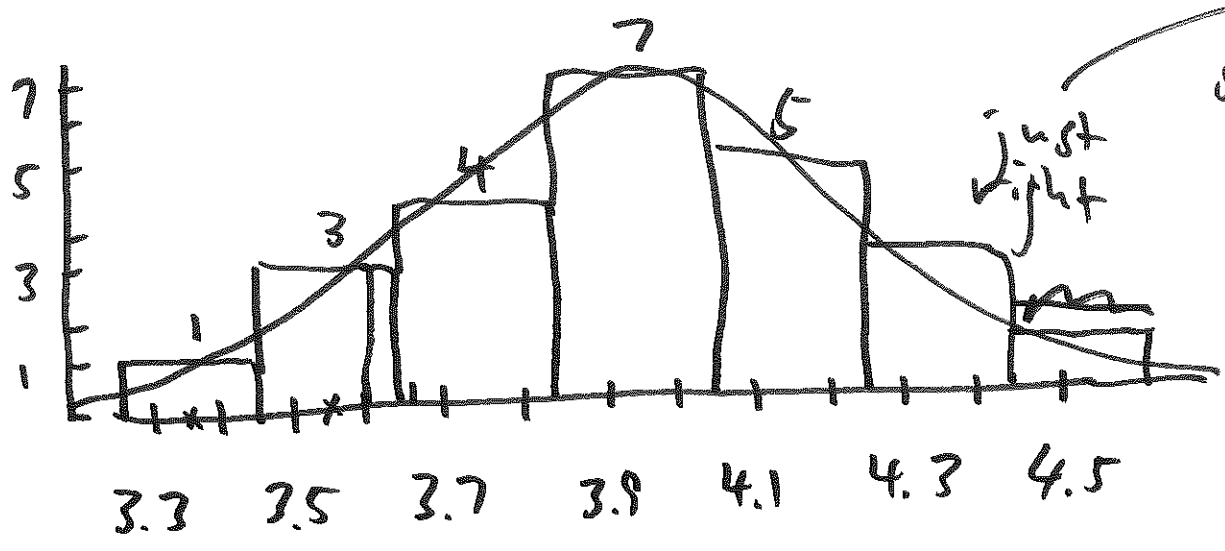
Discussion Section 2

AMS7
28 Jun
2016

①

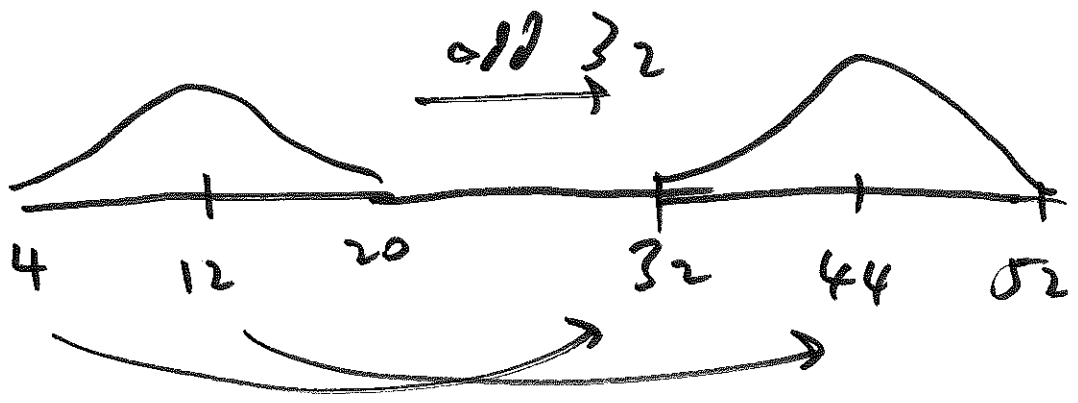


layers 13
too many
layers



symmetric
unimodal
layers 7

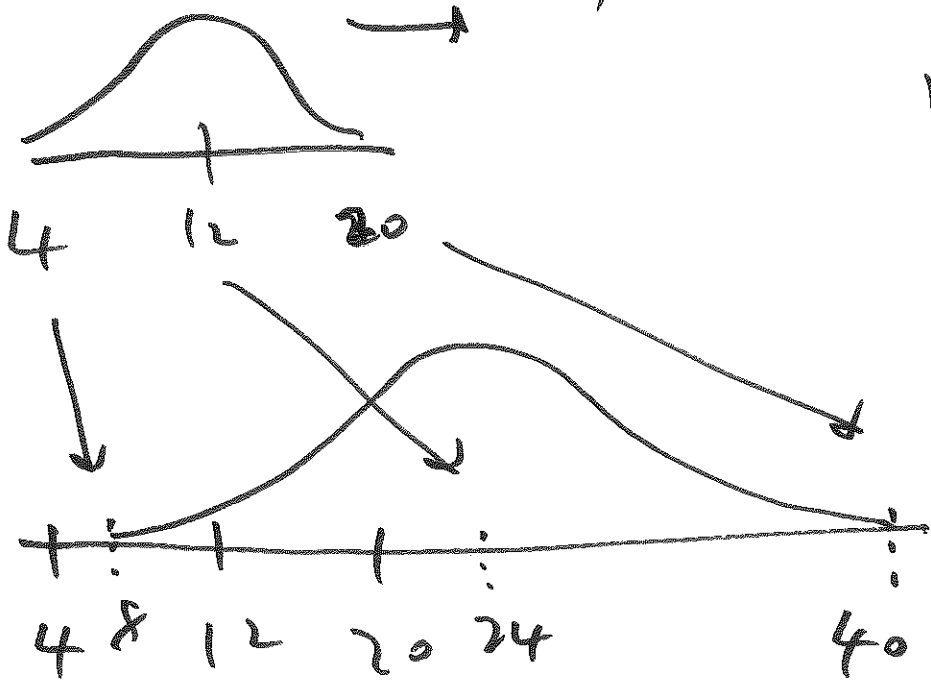
②
$$^{\circ}F = (1.8) \cdot (^{\circ}C) + \underline{\underline{32}}$$



shift
to
right
by 32

②

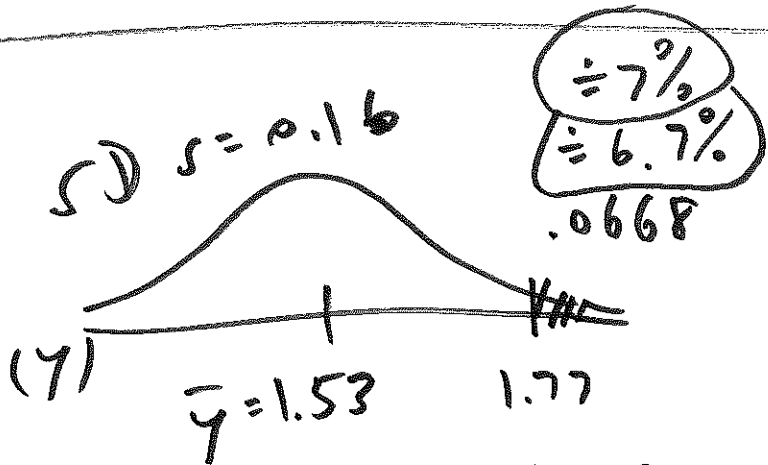
multiply by 2



mean $\times 2$
 SD $\times 2$
 shape unchanged

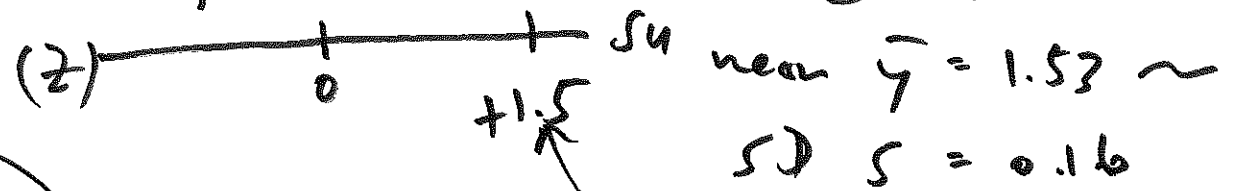
hist. shape in $^{\circ}C$ & in $^{\circ}F$ same

③



enzyme activity
 (y)
 $n = 159$

(9)



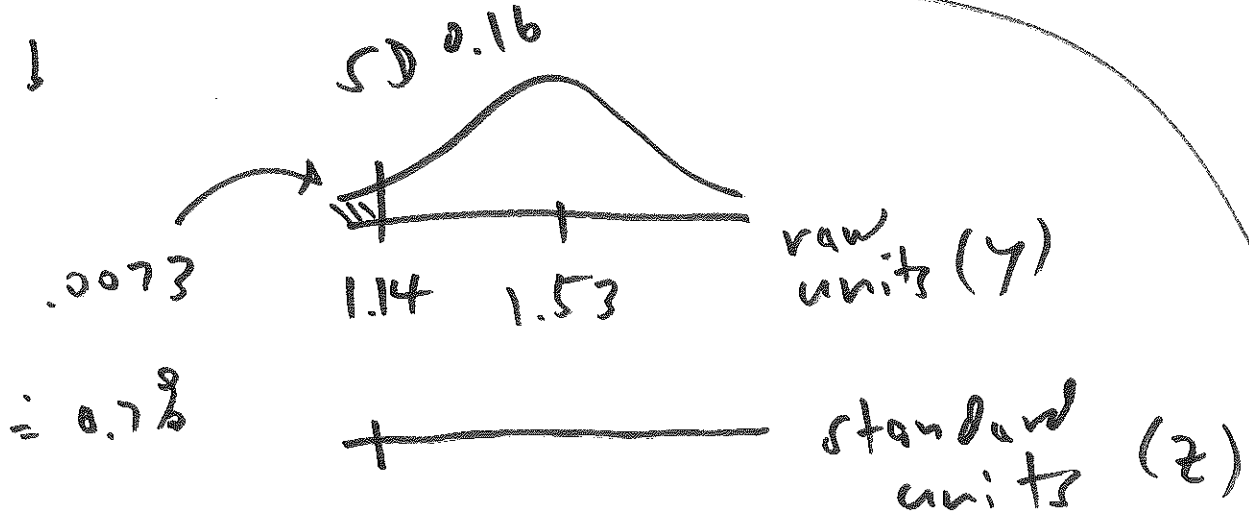
$$z = \frac{y - \bar{y}}{s}$$

$$SD = \frac{\# - \text{mean}}{SD}$$

$$+1.5 = \frac{3}{2} = \frac{24}{168} = \frac{+0.24}{0.16} = \frac{1.77 - 1.53}{0.16}$$

31

②



$$\# z = (.0073)(159) = 1.16 \text{ frogs} = 1 \text{ frog}$$

$$\frac{1.14 - 1.53}{0.16} = \frac{-0.39}{0.16} = -2.44$$

⑧

outcome (Y): health

treatment (X): smoking

- never smoked
- current smoker
- former sm.

PCF (Z₁): age ↑ health ↓ ✓

∴ age is a PCF age ↑ smoking ↓ ✓

PCF (Z_2): health better on
gender average for F than M? ④

smoking different in ave.
for F than M?

↑ smoke
more

PCF (Z_3): exercise PCF? yes

,

,
